

200A & 225A Semi-flush Combination Service Entrance Devices for Photovoltaic Systems



Square D® brand semi-flush combination service entrance devices (CSEDs) are available for use with photovoltaic (PV) system applications and provide a point of connection for utility interactive inverters as defined in NFPA 70, 2008 NEC® Article 690.64 (B). In addition, these products have provisions for PV current transformers (CT) on the load side of the service disconnect when required for PV data monitoring.

Semi-flush devices are available with a 200A or 225A, 120/240 Vac main breaker and Homeline® 26 space/36 circuit interior configurations. An optional 2-Pole Homeline breaker retaining kit is available for the inverter connection point back-fed breaker, as needed.

Features

- Solar ready for new or future installations
- Provisions for two field-install CTs
- Suitable for use with utility-interactive inverter
- Available with 200A or 225A factory installed main breaker
- 225A Max. rating – 2008 NEC 690.64 (B)(2)
- 120/240 Vac, four jaw meter socket with ring style meter cover
- 22kA/10kA series rating
- Combination overhead*/underground service entrance

Application Information

Field-installed current transformers must meet the following specifications:

- Type – Split core current transformer
- Maximum external dimensions – 2.10" x 2.10" x .61"
- Minimum internal window dimensions – .75" x .75" opening
- Insulation voltage rating – 600 Vac
- Certification – UL recognized



Components/Device	Catalog No.	Enclosure Type	Main Ratings	Spaces/Circuits	UPC
200A semi-flush CSED for PV systems	SC2636M200FPV	Semi-flush	200A	26/36	7 85901 49329 7
225A semi-flush CSED for PV systems	SC2636M225FPV	Semi-flush	225A	26/36	7 85901 48095 2
Optional retaining kit for backfed 2-Pole Homeline inverter breaker	PK2SCPV	N/A	N/A	N/A	7 85901 59142 9
*Optional overhead feed tunnel kit	SCTK30	N/A	N/A	N/A	7 85901 39075 6

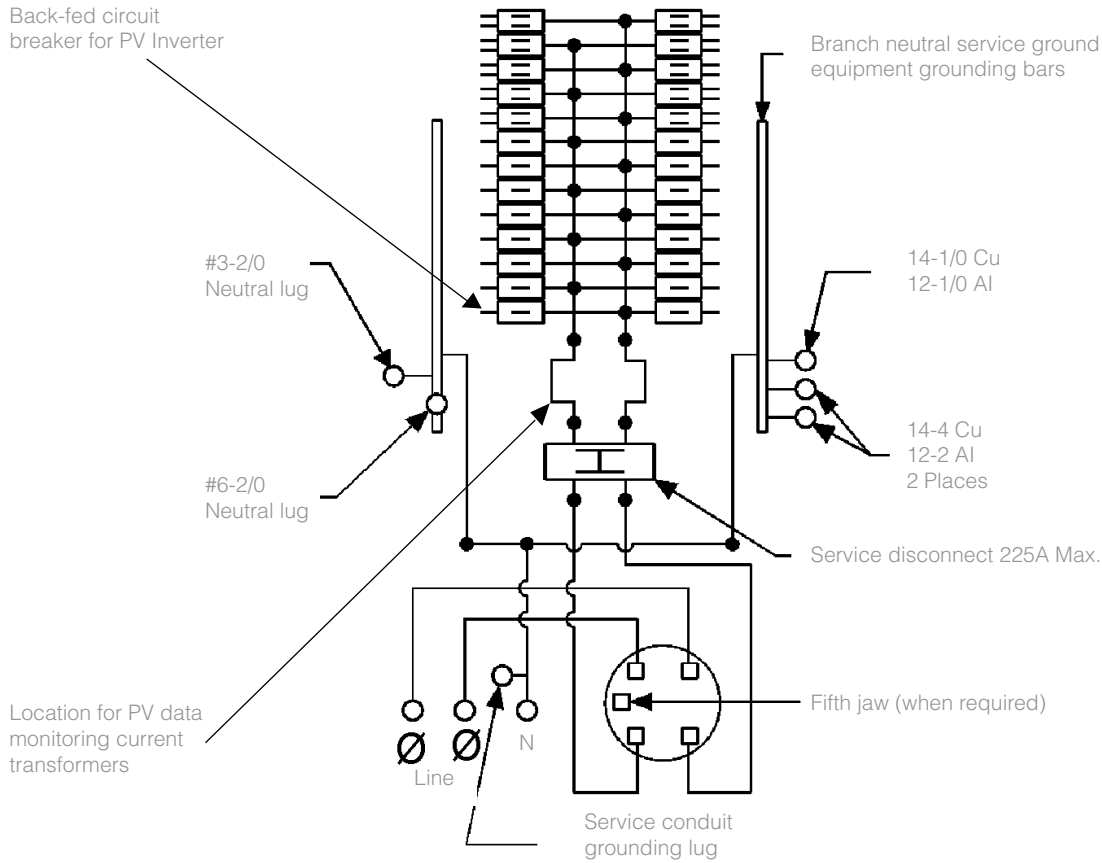


SQUARE D

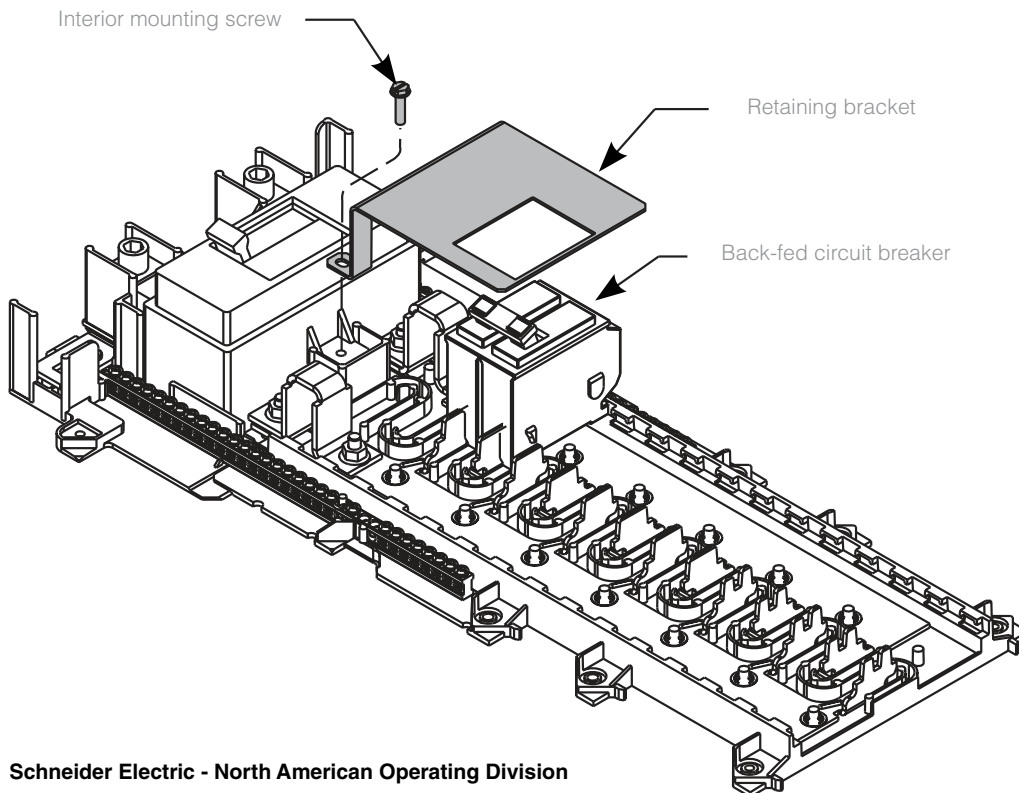
by **Schneider Electric**



CSED Wiring Diagram



Optional Back-fed Inverter Breaker Retaining Kit – PK2SCPV



Schneider Electric - North American Operating Division

1415 S. Roselle Road
 Palatine, IL 60067
 Tel: 847-397-2600
 Fax: 847-925-7500